

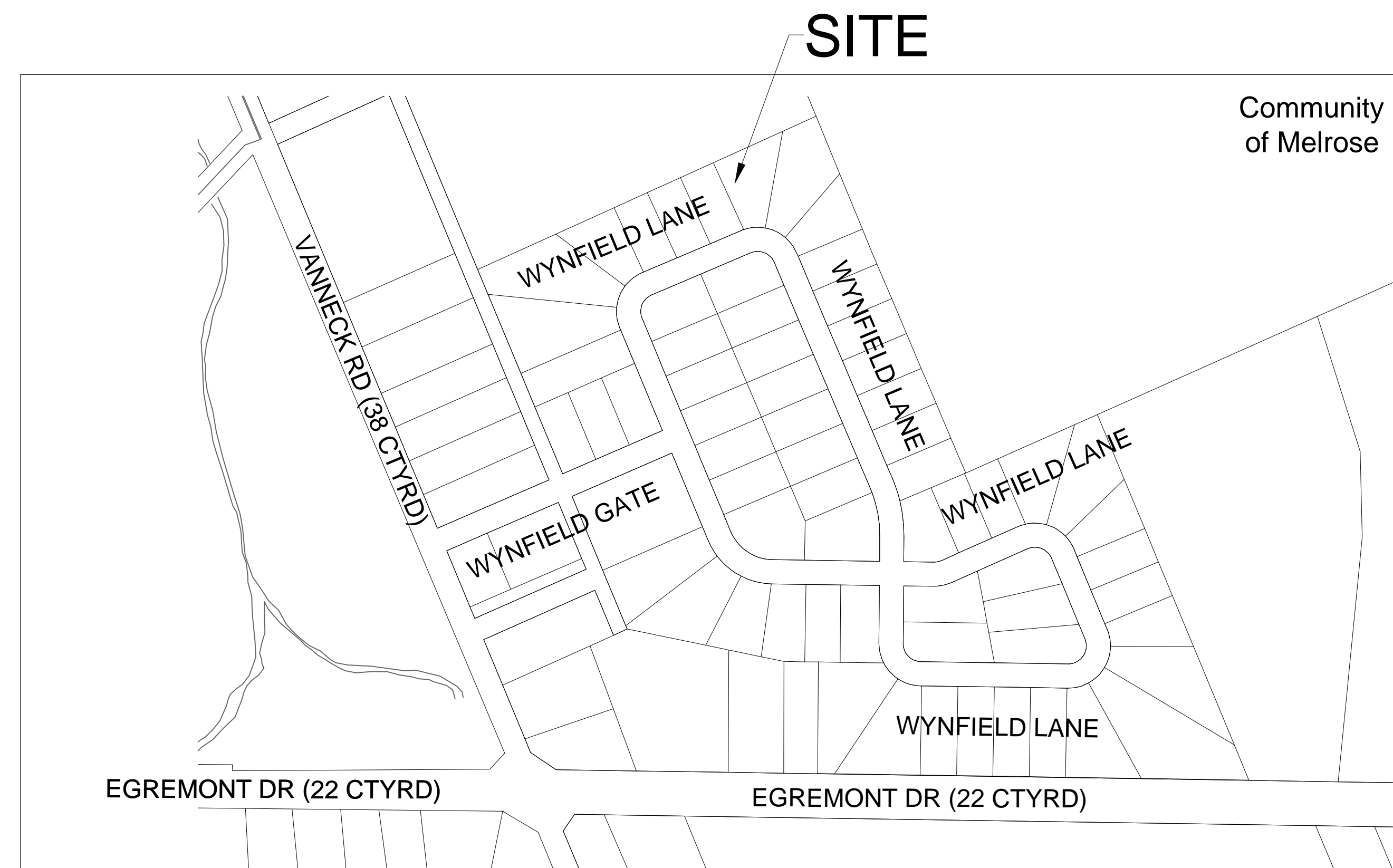
# LIGHTING DESIGN

## COMMUNITY OF MELROSE

### Municipality of Middlesex Centre

## CONTRACT No. RFT-PWE-2022-04

ISSUED FOR TENDER (January 18, 2022)



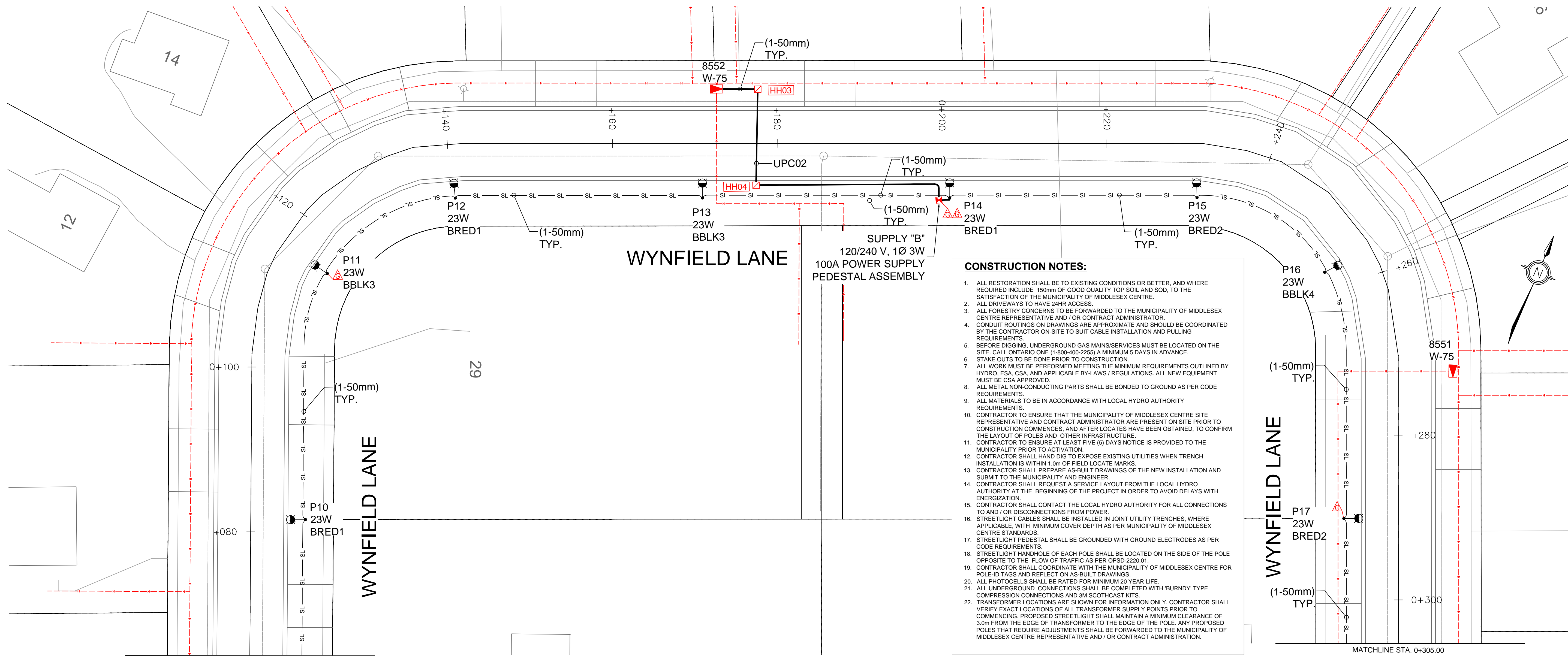
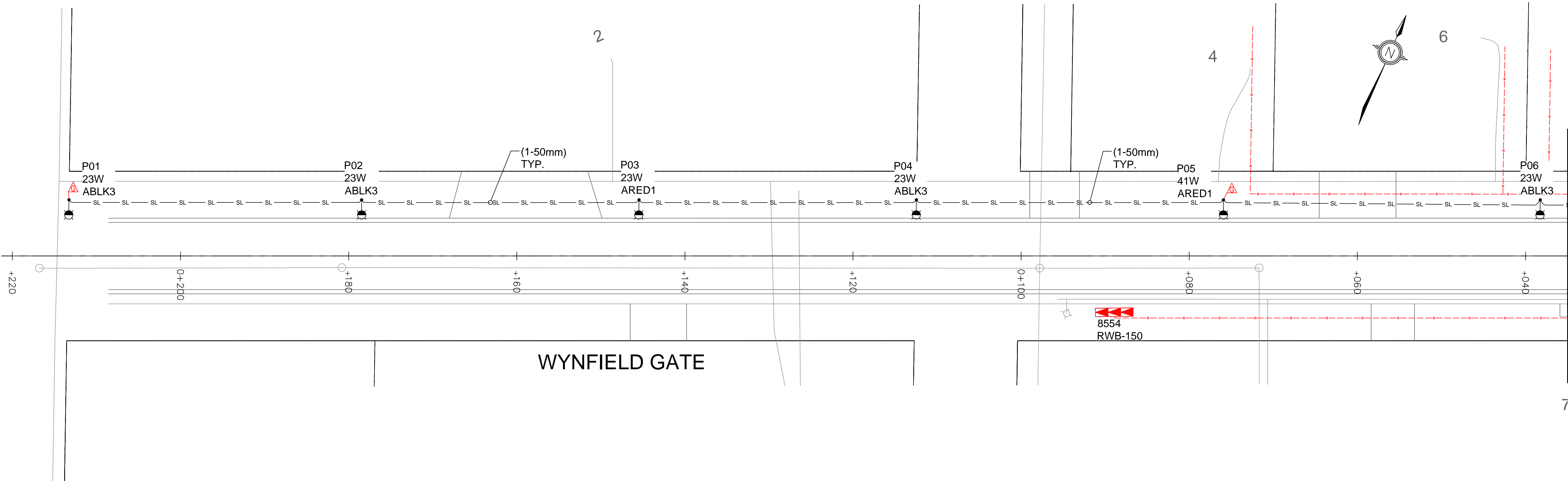
KEY PLAN  
N.T.S.

IT IS THE RESPONSIBILITY OF THE PLAN USER TO INFORM THEMSELVES OF THE EXACT LOCATION OF ALL POLES, LINES, CONDUITS, WATER MAINS, SEWERS, AND OTHER UNDERGROUND AND OVERHEAD UTILITIES AND STRUCTURES BEFORE COMMENCING THE WORK. SUCH UTILITIES AND STRUCTURES ARE NOT NECESSARILY SHOWN ON THE DRAWINGS. WHERE SHOWN THE ACCURACY OF THE POSITION IS NOT GUARANTEED. THE CONTRACTOR SHALL ASSUME ALL LIABILITY FOR DAMAGES TO THE UTILITIES DURING CONSTRUCTION.

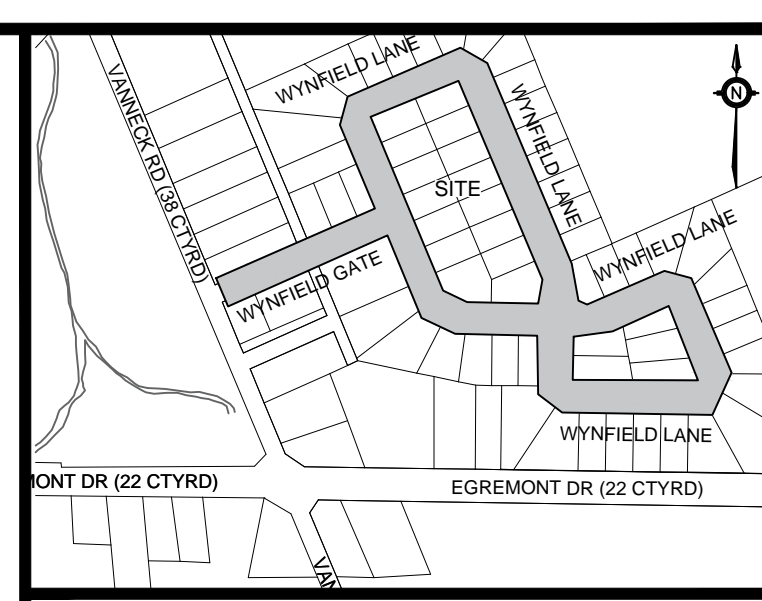
ISSUED FOR TENDER DRAWING SET		
SHEET No.	DWG No.	ELECTRICAL DESIGN
		COVER
01	SL-1	STREETLIGHT LAYOUT 1
02	SL-2	STREETLIGHT LAYOUT 2
03	SL-3	STREETLIGHT LAYOUT 3
04	SL-4	STREETLIGHT LAYOUT 4
05	SL-5	STREETLIGHT SCHEMATIC
06	SL-6	STREETLIGHT SCHEMATIC
07	SL-7	POLE ASSEMBLY TABLE
05	SL-DET-1	STREETLIGHT DETAIL 1
06	SL-DET-2	STREETLIGHT DETAIL 2



VANNECK ROAD (C.R.38)



- CONSTRUCTION NOTES:**
- ALL RESTORATION SHALL BE TO EXISTING CONDITIONS OR BETTER, AND WHERE REQUIRED INCLUDE 150mm OF GOOD QUALITY TOP SOIL AND SOD, TO THE SATISFACTION OF THE MUNICIPALITY OF MIDDLESEX CENTRE.
  - ALL DRIVEWAYS TO HAVE 24HR ACCESS.
  - ALL FORESTRY CONCERNS TO BE FORWARDED TO THE MUNICIPALITY OF MIDDLESEX CENTRE REPRESENTATIVE AND / OR CONTRACT ADMINISTRATOR.
  - CONDUIT ROUTINGS ON DRAWINGS ARE APPROXIMATE AND SHOULD BE COORDINATED BY THE CONTRACTOR ON-SITE TO SUIT CABLE INSTALLATION AND PULLING REQUIREMENTS.
  - BEFORE DIGGING, UNDERGROUND GAS MAINS/SERVICES MUST BE LOCATED ON THE SITE. CALL ONTARIO ONE (1-800-400-2255) A MINIMUM 5 DAYS IN ADVANCE.
  - STAKE OUTS TO BE DONE PRIOR TO CONSTRUCTION.
  - ALL WORK MUST BE PERFORMED MEETING THE MINIMUM REQUIREMENTS OUTLINED BY HYDRO, ESA, CSA, AND APPLICABLE BY-LAWS / REGULATIONS. ALL NEW EQUIPMENT MUST BE CSA APPROVED.
  - ALL METAL NON-CONDUCTING PARTS SHALL BE BONDED TO GROUND AS PER CODE REQUIREMENTS.
  - ALL MATERIALS TO BE IN ACCORDANCE WITH LOCAL HYDRO AUTHORITY REQUIREMENTS.
  - CONTRACTOR TO ENSURE THAT THE MUNICIPALITY OF MIDDLESEX CENTRE SITE REPRESENTATIVE AND CONTRACT ADMINISTRATOR ARE PRESENT ON SITE PRIOR TO CONSTRUCTION COMMENCES, AND AFTER LOCATES HAVE BEEN OBTAINED, TO CONFIRM THE LAYOUT OF POLES AND OTHER INFRASTRUCTURE.
  - CONTRACTOR TO ENSURE AT LEAST FIVE (5) DAYS NOTICE IS PROVIDED TO THE MUNICIPALITY PRIOR TO ACTIVATION.
  - CONTRACTOR SHALL HAND DIG TO EXPOSE EXISTING UTILITIES WHEN TRENCH INSTALLATION IS WITHIN 1.0m OF FIELD LOCATE MARKS.
  - CONTRACTOR SHALL PREPARE AS-BUILT DRAWINGS OF THE NEW INSTALLATION AND SUBMIT TO THE MUNICIPALITY AND ENGINEER.
  - CONTRACTOR SHALL REQUEST A SERVICE LAYOUT FROM THE LOCAL HYDRO AUTHORITY AT THE BEGINNING OF THE PROJECT IN ORDER TO AVOID DELAYS WITH ENERGIZATION.
  - CONTRACTOR SHALL CONTACT THE LOCAL HYDRO AUTHORITY FOR ALL CONNECTIONS TO AND / OR DISCONNECTIONS FROM POWER.
  - STREETLIGHT CABLES SHALL BE INSTALLED IN JOINT UTILITY TRENCHES, WHERE APPLICABLE, WITH MINIMUM COVER DEPTH AS PER MUNICIPALITY OF MIDDLESEX CENTRE STANDARDS.
  - STREETLIGHT PEDESTAL SHALL BE GROUNDED WITH GROUND ELECTRODES AS PER CODE REQUIREMENTS.
  - STREETLIGHT HANDHOLE OF EACH POLE SHALL BE LOCATED ON THE SIDE OF THE POLE OPPOSITE TO THE FLOW OF TRAFFIC AS PER OPSD-2220.01.
  - CONTRACTOR SHALL COORDINATE WITH THE MUNICIPALITY OF MIDDLESEX CENTRE FOR POLE-ID TAGS AND REFLECT ON AS-BUILT DRAWINGS.
  - ALL PHOTOCELLS SHALL BE RATED FOR MINIMUM 20 YEAR LIFE.
  - ALL UNDERGROUND CONNECTIONS SHALL BE COMPLETED WITH 'BURNDY' TYPE COMPRESSION CONNECTIONS AND 3M SCOTCHCAST KITS.
  - TRANSFORMER LOCATIONS ARE SHOWN FOR INFORMATION ONLY. CONTRACTOR SHALL VERIFY EXACT LOCATIONS OF ALL TRANSFORMER SUPPLY POINTS PRIOR TO COMMENCING. PROPOSED STREETLIGHT SHALL MAINTAIN A MINIMUM CLEARANCE OF 3.0m FROM THE EDGE OF TRANSFORMER TO THE EDGE OF THE POLE. ANY PROPOSED POLES THAT REQUIRE ADJUSTMENTS SHALL BE FORWARDED TO THE MUNICIPALITY OF MIDDLESEX CENTRE REPRESENTATIVE AND / OR CONTRACT ADMINISTRATION.



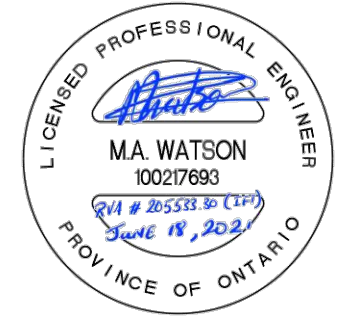
**KEY PLAN**  
N.T.S.

No.	Revision	Comments
00	2021-02-01	ISSUED FOR PRELIMINARY REVIEW
01	2021-03-11	ISSUED FOR HONI REVIEW
02	2021-06-18	ISSUED FOR TENDER

**CAUTION:**  
THE LOCATIONS OF EXISTING UNDERGROUND UTILITIES ARE SHOWN IN AN APPROXIMATE WAY ONLY AND HAVE NOT BEEN INDEPENDENTLY VERIFIED BY THE OWNER OR HIS REPRESENTATIVE. THE CONTRACTOR SHALL DETERMINE THE EXACT LOCATION OF ALL EXISTING UTILITIES BEFORE COMMENCING WORK AND AGREES TO BE FULLY RESPONSIBLE FOR ANY DAMAGES WHICH MIGHT BE OCCASIONED BY THE CONTRACTOR'S FAILURE TO EXACTLY LOCATE AND PRESERVE ANY AND ALL UNDERGROUND UTILITIES.

- LEGEND:**
- SIDE-MOUNTED LED LIGHT FIXTURE, TYPE 3LB DISTRIBUTION, WATTAGE AS INDICATED, 120-277V PHOTOCENTRAL, C/W A 4" TAPERED ELLIPTICAL ARM, MOUNTED ON A 24" DIRECT BURIED ROUND ALUMINUM POLE, NXT-S SERIES, C/W 20 YEAR LONG LIFE PHOTOCELL.
    - CAT # NXT-12S-5-7-3LB-6-GY-3-UL-X-2H (QTY. 47)
    - CAT # NXT-24S-5-7-3LB-5-GY-3-UL-X-2H (QTY. 3)
  - PROPOSED TYPE 1 - 305mm x 305mm QUARTZITE COMP. ELECTRICAL HANDHOLE, TIER 15 - LID / BOX LOAD RATING, 18" DEEP.
  - PROPOSED POWER SUPPLY PEDESTAL BY PSI C/W CONCRETE FOOTING AND ANCHORAGE ASSEMBLIES:
    - CAT # SL421-4-15(100)
    - CAT # UP1420P
  - PROPOSED GROUND ROD.
  - HYDRO ONE PAD-MOUNTED TRANSFORMER (FOR INFORMATION ONLY, EXACT LOCATIONS TO BE DETERMINED IN THE FIELD).
  - PROPOSED UNDERGROUND DUCT(S) FROM POWER SUPPLY TO PEDESTAL, QUANTITY AS NOTED IN UPC TABLE.
  - SL - PROPOSED 50mmØ STREETLIGHT UNDERGROUND DUCT.

- GENERAL NOTES:**
- ALL DIMENSIONS ARE IN METERS UNLESS OTHERWISE NOTED.
  - ALL STAND-ALONE POLE INSTALLED 2.0m FROM THE BACK OF CURB AS PER MIDDLESEX CENTRE DESIGN FIGURE 1.5.
  - PROPOSED TRENCH LOCATION AT 1.8m FROM BACK OF CURB UNLESS STATED OTHERWISE.



Drawing Prepared By:

R.V. Anderson Associates Limited  
engineering • environment • infrastructure

Client:

in the centre of it all

Project Name:

**COMMUNITY OF MELROSE STREETLIGHT DESIGN**

Drawing Title:

**STREETLIGHT LAYOUT 1**

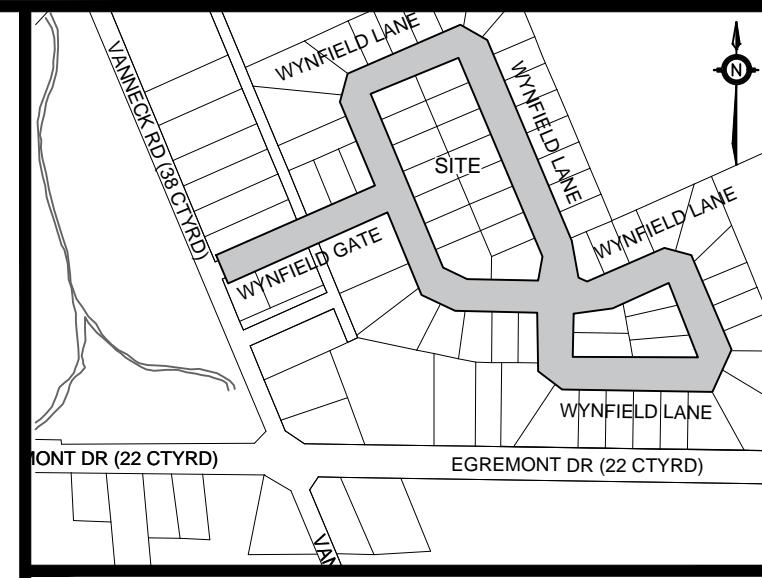
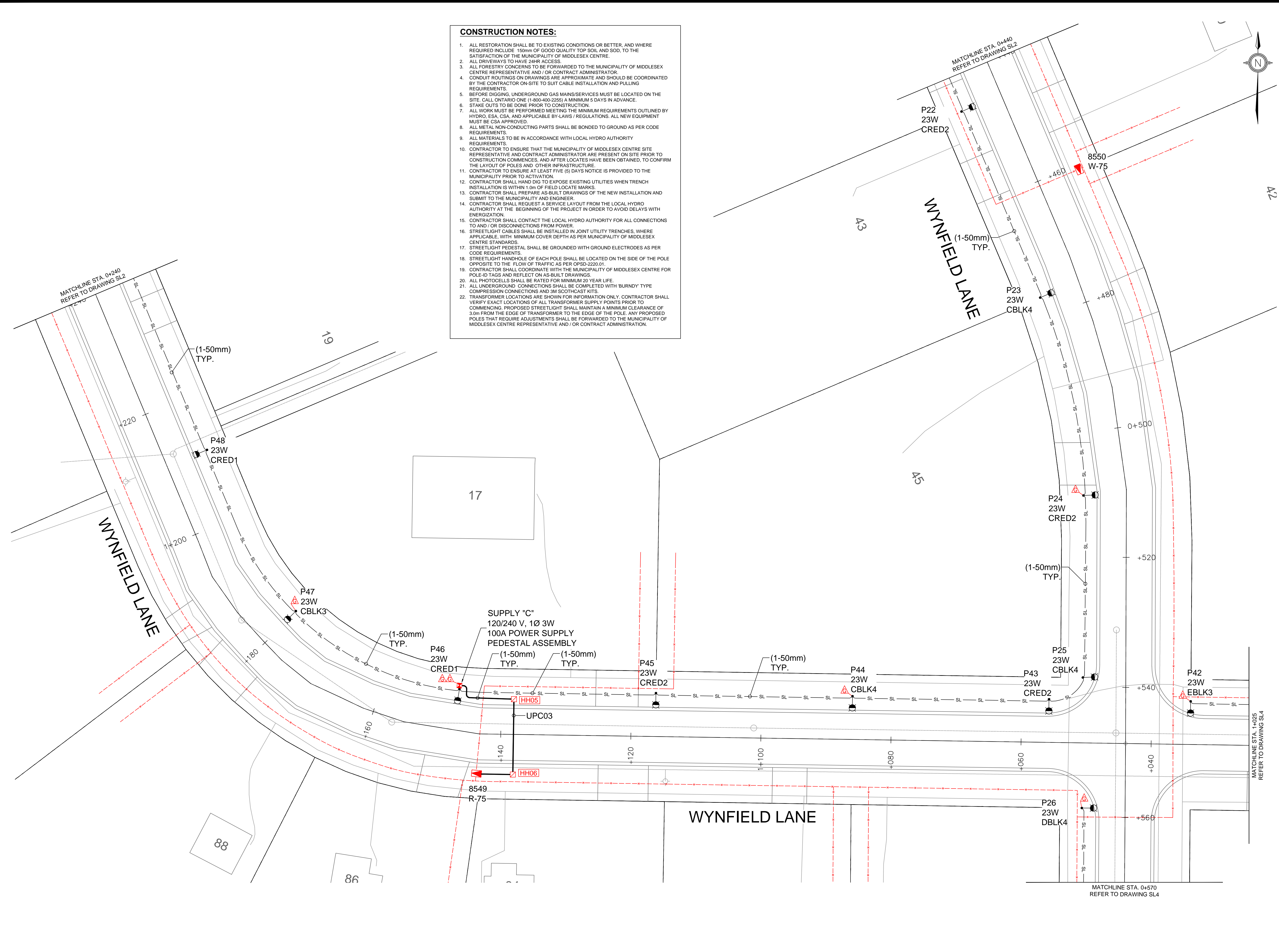
Drawn:	H.R.T.	Design:	M.A.W.	Date:	JANUARY 2021
Checked:	P.L.G.	Approved:		Scale:	1:250
CADD File:	205533 -PR-SHT-SL_Melrose.dwg			Dwg. No.:	SL-1
Project No.:	205533.30				







- CONSTRUCTION NOTES:**
- ALL RESTORATION SHALL BE TO EXISTING CONDITIONS OR BETTER, AND WHERE REQUIRED INCLUDE 150mm OF GOOD QUALITY TOP SOIL AND SOD, TO THE SATISFACTION OF THE MUNICIPALITY OF MIDDLESEX CENTRE.
  - ALL DRIVEWAYS TO HAVE 24HR ACCESS.
  - ALL FORESTRY CONCERNS TO BE FORWARDED TO THE MUNICIPALITY OF MIDDLESEX CENTRE REPRESENTATIVE AND /OR CONTRACT ADMINISTRATOR.
  - CONDUIT ROUTINGS ON DRAWINGS ARE APPROXIMATE AND SHOULD BE COORDINATED BY THE CONTRACTOR ON-SITE TO SUIT CABLE INSTALLATION AND PULLING REQUIREMENTS.
  - BEFORE DIGGING, UNDERGROUND GAS MAINS/SERVICES MUST BE LOCATED ON THE SITE. CALL ONTARIO ONE (1-800-400-2255) A MINIMUM 5 DAYS IN ADVANCE.
  - STAKE OUTS TO BE DONE PRIOR TO CONSTRUCTION.
  - ALL WORK MUST BE PERFORMED MEETING THE MINIMUM REQUIREMENTS OUTLINED BY HYDRO, ESA, CSA, AND APPLICABLE BY-LAWS / REGULATIONS. ALL NEW EQUIPMENT MUST BE CSA APPROVED.
  - ALL METAL NON-CONDUCTING PARTS SHALL BE BONDED TO GROUND AS PER CODE REQUIREMENTS.
  - ALL MATERIALS TO BE IN ACCORDANCE WITH LOCAL HYDRO AUTHORITY REQUIREMENTS.
  - CONTRACTOR TO ENSURE THAT THE MUNICIPALITY OF MIDDLESEX CENTRE SITE REPRESENTATIVE AND CONTRACT ADMINISTRATOR ARE PRESENT ON SITE PRIOR TO CONSTRUCTION COMMENCES, AND AFTER LOCATES HAVE BEEN OBTAINED, TO CONFIRM THE LAYOUT OF POLES AND OTHER INFRASTRUCTURE.
  - CONTRACTOR TO ENSURE AT LEAST FIVE (5) DAYS NOTICE IS PROVIDED TO THE MUNICIPALITY PRIOR TO ACTIVATION.
  - CONTRACTOR SHALL HAND DIG TO EXPOSE EXISTING UTILITIES WHEN TRENCH INSTALLATION IS WITHIN 1.0m OF FIELD LOCATE MARKS.
  - CONTRACTOR SHALL PREPARE AS-BUILT DRAWINGS OF THE NEW INSTALLATION AND SUBMIT TO THE MUNICIPALITY AND ENGINEER.
  - CONTRACTOR SHALL REQUEST A SERVICE LAYOUT FROM THE LOCAL HYDRO AUTHORITY AT THE BEGINNING OF THE PROJECT IN ORDER TO AVOID DELAYS WITH ENERGIZATION.
  - CONTRACTOR SHALL CONTACT THE LOCAL HYDRO AUTHORITY FOR ALL CONNECTIONS TO AND / OR DISCONNECTIONS FROM POWER.
  - STREETLIGHT CABLES SHALL BE INSTALLED IN JOINT UTILITY TRENCHES, WHERE APPLICABLE, WITH MINIMUM COVER DEPTH AS PER MUNICIPALITY OF MIDDLESEX CENTRE STANDARDS.
  - STREETLIGHT PEDESTAL SHALL BE GROUNDED WITH GROUND ELECTRODES AS PER CODE REQUIREMENTS.
  - STREETLIGHT HANDHOLE OF EACH POLE SHALL BE LOCATED ON THE SIDE OF THE POLE OPPOSITE TO THE FLOW OF TRAFFIC AS PER OPSD-2220.01.
  - CONTRACTOR SHALL COORDINATE WITH THE MUNICIPALITY OF MIDDLESEX CENTRE FOR POLE-ID TAGS AND REFLECT ON AS-BUILT DRAWINGS.
  - ALL PHOTOCELLS SHALL BE RATED FOR MINIMUM 20 YEAR LIFE.
  - ALL UNDERGROUND CONNECTIONS SHALL BE COMPLETED WITH BURNDY TYPE COMPRESSION CONNECTIONS AND 3M SCOTCHCAST KITS.
  - TRANSFORMER LOCATIONS ARE SHOWN FOR INFORMATION ONLY. CONTRACTOR SHALL VERIFY EXACT LOCATIONS OF ALL TRANSFORMER SUPPLY POINTS PRIOR TO COMMENCING. PROPOSED STREETLIGHT SHALL MAINTAIN A MINIMUM CLEARANCE OF 3.0m FROM THE EDGE OF TRANSFORMER TO THE EDGE OF THE POLE. ANY PROPOSED POLES THAT REQUIRE ADJUSTMENTS SHALL BE FORWARDED TO THE MUNICIPALITY OF MIDDLESEX CENTRE REPRESENTATIVE AND /OR CONTRACT ADMINISTRATION.



**KEY PLAN**  
R.T.S.

No.	Revision	Comments
00	2021-02-01	ISSUED FOR PRELIMINARY REVIEW
01	2021-03-11	ISSUED FOR HONI REVIEW
02	2021-06-18	ISSUED FOR TENDER

**CAUTION:**  
THE LOCATIONS OF EXISTING UNDERGROUND UTILITIES ARE SHOWN IN AN APPROXIMATE WAY ONLY AND HAVE NOT BEEN INDEPENDENTLY VERIFIED BY THE OWNER OR ITS REPRESENTATIVE. THE CONTRACTOR SHALL DETERMINE THE EXACT LOCATION OF ALL EXISTING UTILITIES BEFORE COMMENCING WORK AND AGREES TO FULLY RESPONSIBLE FOR ANY DAMAGES WHICH MIGHT BE OCCASIONED BY THE CONTRACTOR'S FAILURE TO EXACTLY LOCATE AND PRESERVE ANY AND ALL UNDERGROUND UTILITIES.

- LEGEND:**
- SIDE-MOUNTED LED LIGHT FIXTURE, TYPE 3LB DISTRIBUTION, WATTAGE AS INDICATED, 120-277V PHOTOCENTRAL, C/W A 4" TAPERED ELLIPTICAL ARM, MOUNTED ON A 24" DIRECT BURIED ROUND ALUMINUM POLE, NXT-S SERIES, C/W 20 YEAR LONG LIFE PHOTOCELL.
    - CAT # NXT-12S-5-7-3LB-6-GY-3-UL-X-2H (QTY. 47)
    - CAT # NXT-24S-5-7-3LB-5-GY-3-UL-X-2H (QTY. 3)
  - PROPOSED TYPE 1 - 305mm x 305mm QUARTZITE COMP. ELECTRICAL HANDHOLE, TIER 15 - LID / BOX LOAD RATING, 18" DEEP.
  - PROPOSED POWER SUPPLY PEDESTAL BY PSI C/W CONCRETE FOOTING AND ANCHORAGE ASSEMBLIES:
    - CAT # SL421-4-15(100)
    - CAT # UP1420P
  - PROPOSED GROUND ROD.
  - HYDRO ONE PAD-MOUNTED TRANSFORMER (FOR INFORMATION ONLY, EXACT LOCATIONS TO BE DETERMINED IN THE FIELD).
  - PROPOSED UNDERGROUND DUCT(S) FROM POWER SUPPLY TO PEDESTAL, QUANTITY AS NOTED IN UPC TABLE.
  - SL - PROPOSED 50mmØ STREETLIGHT UNDERGROUND DUCT.

- GENERAL NOTES:**
- ALL DIMENSIONS ARE IN METERS UNLESS OTHERWISE NOTED.
  - ALL STAND-ALONE POLE INSTALLED 2.0m FROM THE BACK OF CURB AS PER MIDDLESEX CENTRE DESIGN FIGURE 1.5.
  - PROPOSED TRENCH LOCATION AT 1.8m FROM BACK OF CURB UNLESS STATED OTHERWISE.



Drawing Prepared By:  
**Arva**  
R.V. Anderson Associates Limited  
engineering • environment • infrastructure

Client:  
**middlesex centre**  
in the centre of it all

Project Name:  
**COMMUNITY OF MELROSE STREETLIGHT DESIGN**

Drawing Title:  
**STREETLIGHT LAYOUT 3**

Drawn: H.R.T.	Design: M.A.W.	Date: JANUARY 2021
Checked: P.L.G.	Approved:	Scale: 1:250
CADD File: 205533 -PR-SHT-SL_Melrose.dwg	Dwg. No.:	<b>SL-3</b>
Project No.:	205533.30	

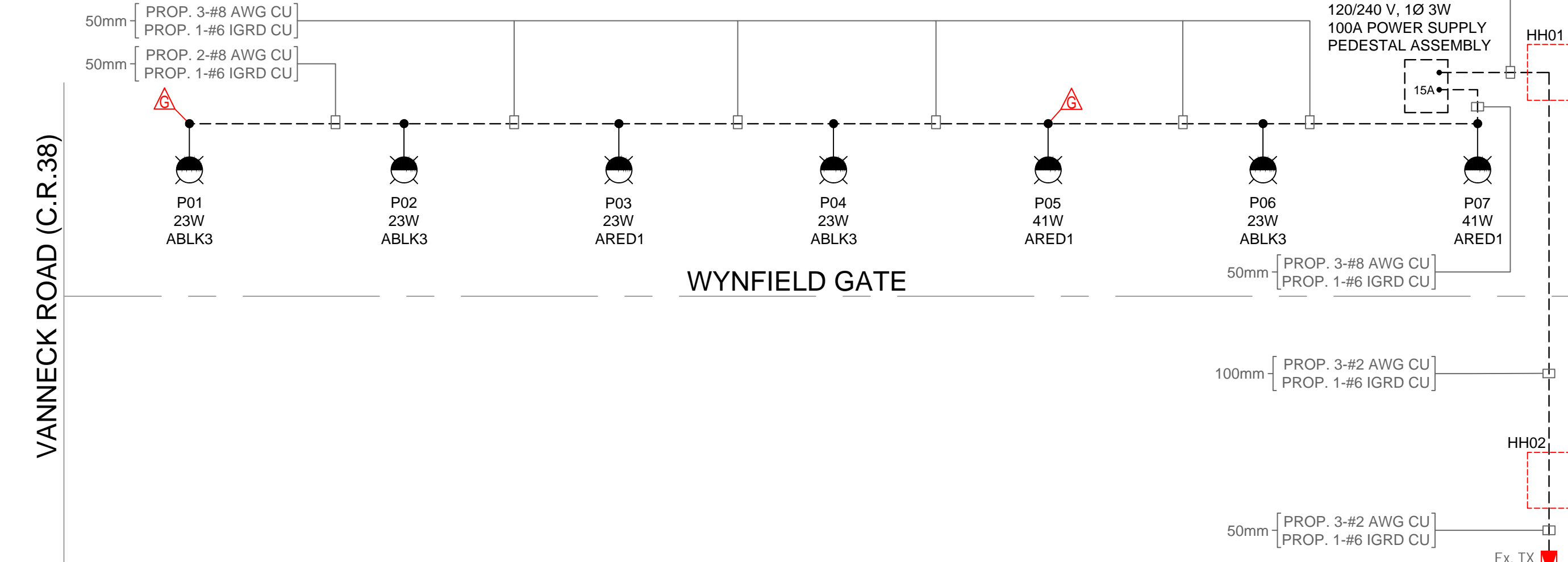






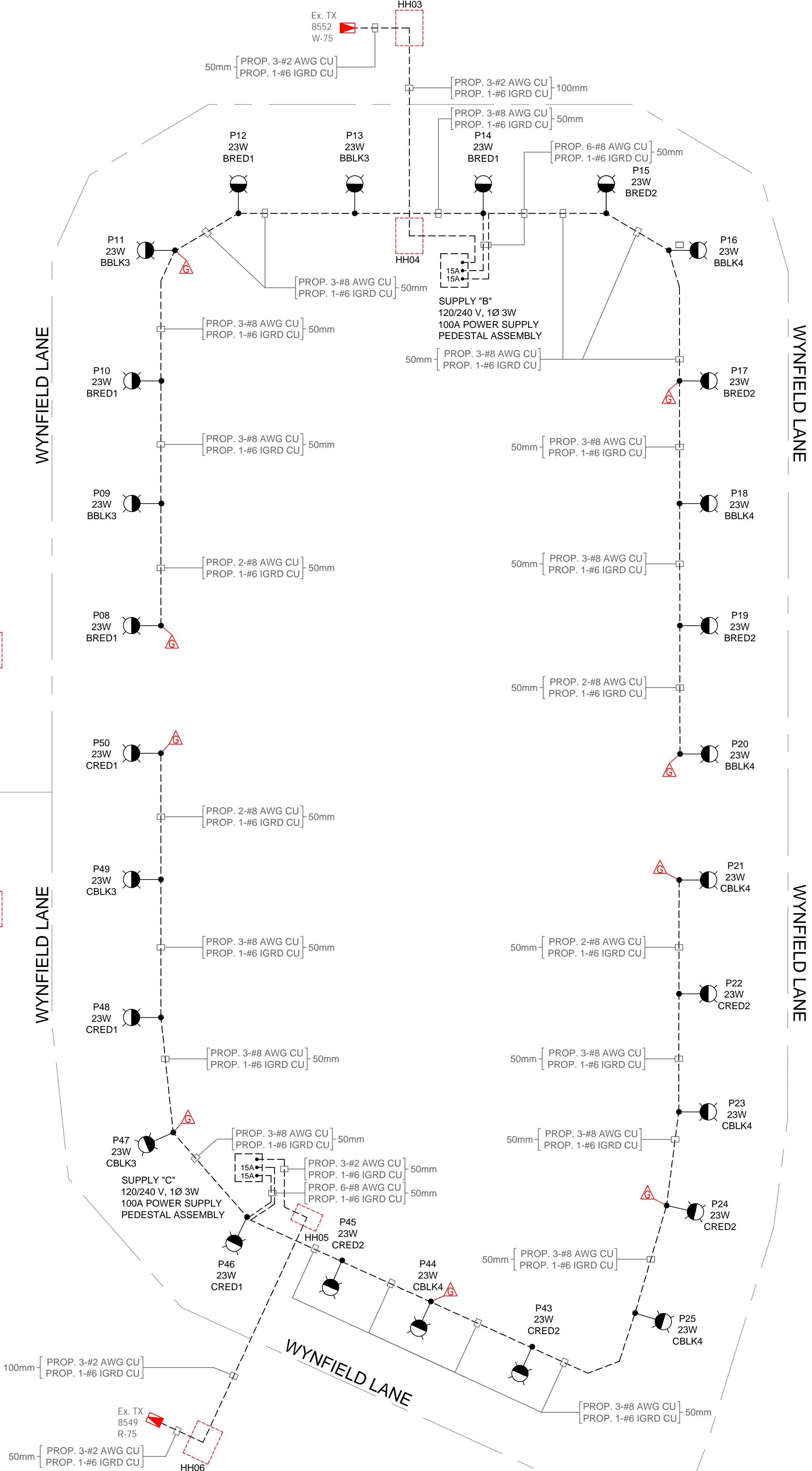
SUPPLY "A" - 120/240V, 1Ø 3W 100A POWER SUPPLY PEDESTAL ASSEMBLY							
SUB-TOTAL LOAD* (WATTS)	LOAD DESCRIPTION	CIRCUIT NUMBER	BREAKER RATING	BREAKER RATING	CIRCUIT NUMBER	LOAD DESCRIPTION	SUB-TOTAL LOAD* (WATTS)
105	P03, P05, P07	RED 1	15A	15A	RED 2		0
92	P01, P02, P04, P06	BLK 3	15A	15A	BLK 4		0
0		RED 5	-	-	RED 6		0
0		BLK 7	-	-	BLK 8		0
* SUB TOTAL RED PHASE = 105 W							
* SUB TOTAL BLACK PHASE = 92 W							
* TOTAL LOAD = 197 W							

SUPPLY "B" - 120/240V, 1Ø 3W 100A POWER SUPPLY PEDESTAL ASSEMBLY							
SUB-TOTAL LOAD* (WATTS)	LOAD DESCRIPTION	CIRCUIT NUMBER	BREAKER RATING	BREAKER RATING	CIRCUIT NUMBER	LOAD DESCRIPTION	SUB-TOTAL LOAD* (WATTS)
92	P08, P10, P12, P14	RED 1	15A	15A	RED 2	P15, P17, P19	69
69	P09, P11, P13	BLK 3	15A	15A	BLK 4	P16, P18, P20	69
0		RED 5	-	-	RED 6		0
0		BLK 7	-	-	BLK 8		0
* SUB TOTAL RED PHASE = 161 W							
* SUB TOTAL BLACK PHASE = 138 W							
* TOTAL LOAD = 299 W							

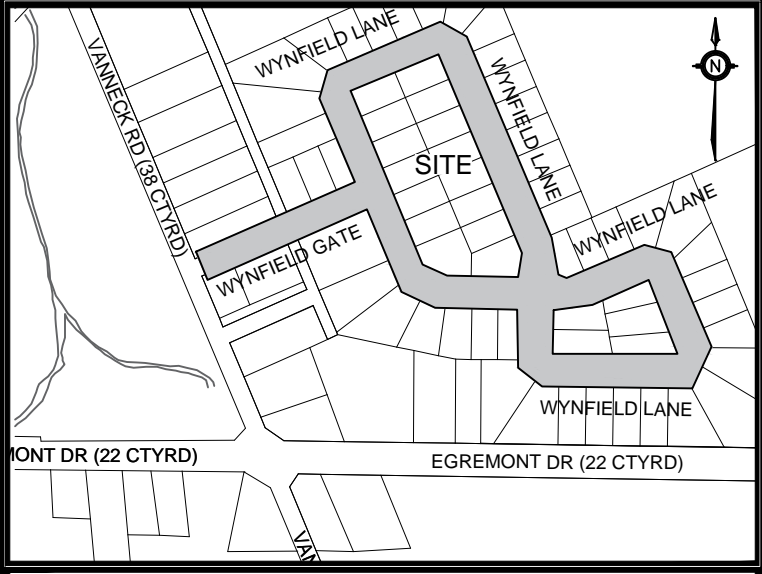


SUPPLY "C" - 120/240V, 1Ø 3W 100A POWER SUPPLY PEDESTAL ASSEMBLY							
SUB-TOTAL LOAD* (WATTS)	LOAD DESCRIPTION	CIRCUIT NUMBER	BREAKER RATING	BREAKER RATING	CIRCUIT NUMBER	LOAD DESCRIPTION	SUB-TOTAL LOAD* (WATTS)
69	P46, P48, P50	RED 1	15A	15A	RED 2	P45, P43, P24, P22	92
46	P47, P49	BLK 3	15A	15A	BLK 4	P44, P25, P23, P21	92
0		RED 5	-	-	RED 6		0
0		BLK 7	-	-	BLK 8		0
* SUB TOTAL RED PHASE = 161 W							
* SUB TOTAL BLACK PHASE = 138 W							
* TOTAL LOAD = 299 W							

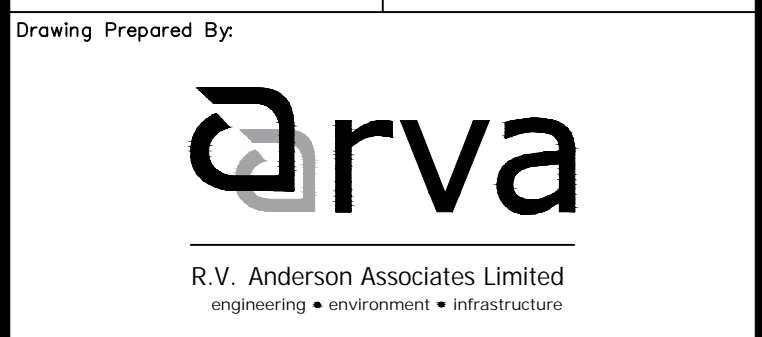
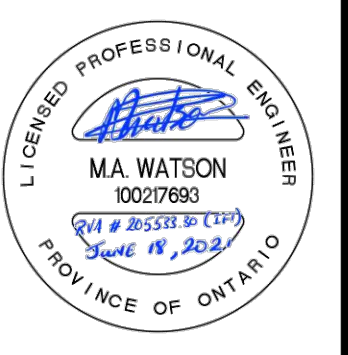
UNDERPAVEMENT CROSSINGS						
CROSSING	ROAD	LENGTH (m)	TYPE OF INSTALLATION	DUCTS		REMARKS
				QTY.	SIZE TYPE	
UPC01	WYNFIELD GATE	16.22 m	OPEN CUT	2	100 mm RPVC	
UPC02	WYNFIELD LANE	11.66 m	OPEN CUT	2	100 mm RPVC	
UPC03	WYNFIELD LANE	13.15 m	OPEN CUT	2	100 mm RPVC	



SEE SCHEMATIC  
DETAIL SL-6



No.	Revision	Comments
00	2021-02-01	ISSUED FOR PRELIMINARY REVIEW
01	2021-03-11	ISSUED FOR HONI REVIEW
02	2021-06-18	ISSUED FOR TENDER



Project Name:  
**COMMUNITY OF MELROSE  
STREETLIGHT DESIGN**

Drawing Title:  
**STREETLIGHT SCHEMATIC**

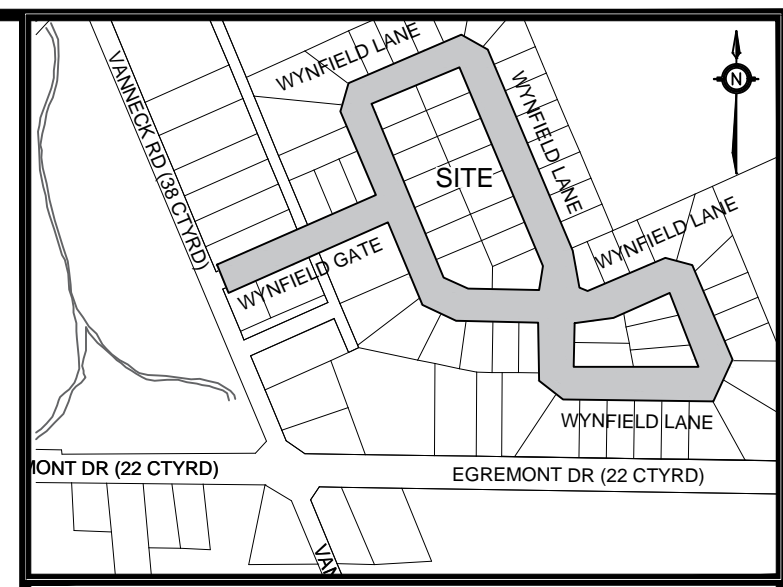
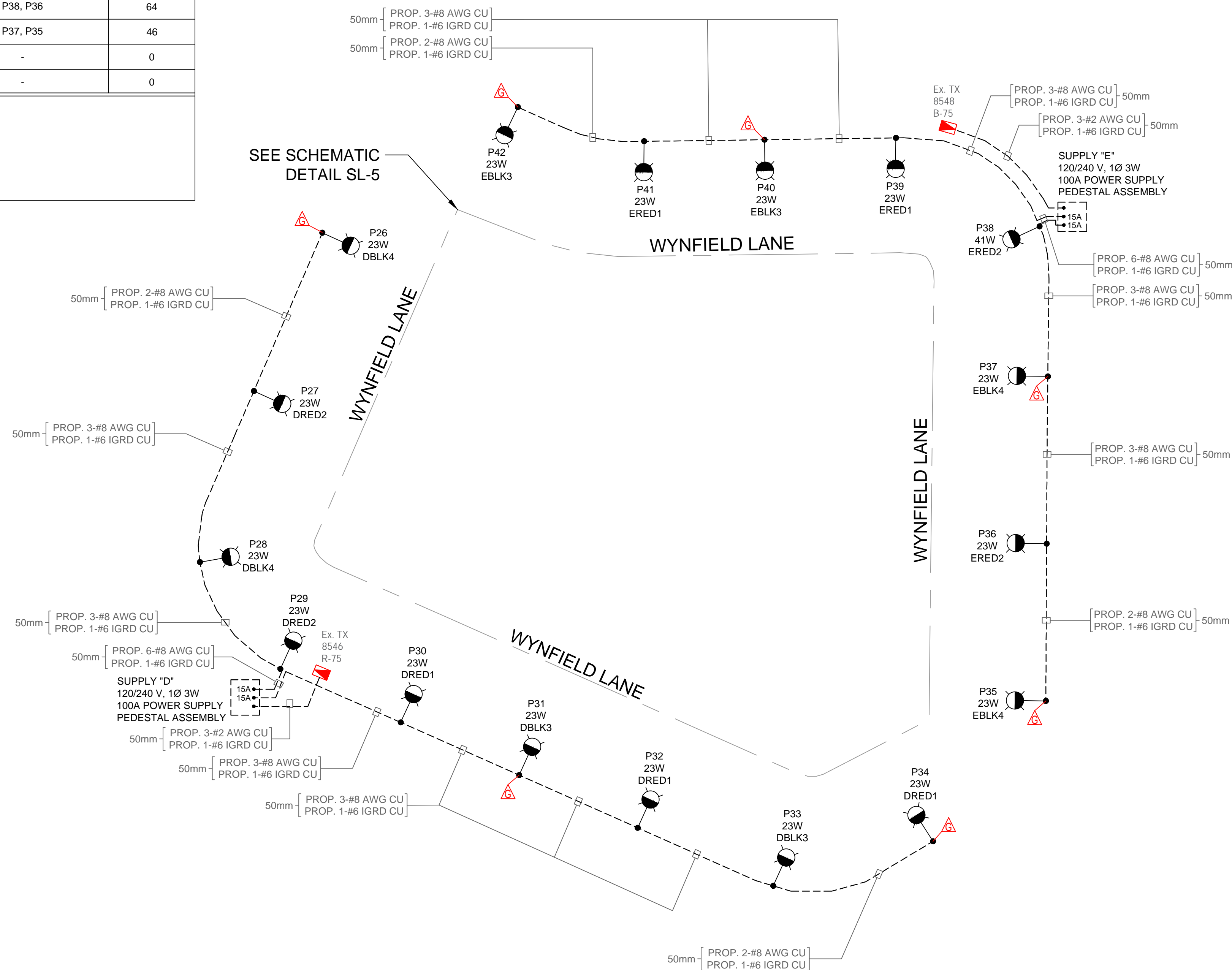
Drawn:	H.R.T	Design:	M.A.W.	Date:	JANUARY 2021
Checked:	P.L.G.	Approved:		Scale:	N.T.S.
CADD File:	205533 -PR-SHT-SL_Melrose.dwg			Dwg. No.:	SL-5
Project No.:	205533.30				

SUPPLY "D" - 120/240V, 1Ø 3W 100A POWER SUPPLY PEDESTAL ASSEMBLY							
SUB-TOTAL LOAD* (WATTS)	LOAD DESCRIPTION	CIRCUIT NUMBER	BREAKER RATING	BREAKER RATING	CIRCUIT NUMBER	LOAD DESCRIPTION	SUB-TOTAL LOAD* (WATTS)
69	P30, P32, P34	RED 1	15A	15A	RED 2	P29, P27	46
46	P31, P33	BLK 3	15A	15A	BLK 4	P28, P26	46
0		RED 5	-	-	RED 6	-	0
0		BLK 7	-	-	BLK 8	-	0

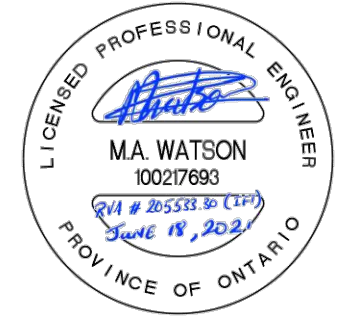
\* SUB TOTAL RED PHASE = 115 W  
\* SUB TOTAL BLACK PHASE = 92 W  
\* TOTAL LOAD = 207 W

SUPPLY "E" - 120/240V, 1Ø 3W 100A POWER SUPPLY PEDESTAL ASSEMBLY							
SUB-TOTAL LOAD* (WATTS)	LOAD DESCRIPTION	CIRCUIT NUMBER	BREAKER RATING	BREAKER RATING	CIRCUIT NUMBER	LOAD DESCRIPTION	SUB-TOTAL LOAD* (WATTS)
46	P39, P41	RED 1	15A	15A	RED 2	P38, P36	64
46	P40, P42	BLK 3	15A	15A	BLK 4	P37, P35	46
0		RED 5	-	-	RED 6	-	0
0		BLK 7	-	-	BLK 8	-	0

\* SUB TOTAL RED PHASE = 110 W  
\* SUB TOTAL BLACK PHASE = 92 W  
\* TOTAL LOAD = 202 W



No.	Revision	Comments
00	2021-02-01	ISSUED FOR PRELIMINARY REVIEW
01	2021-03-11	ISSUED FOR HONI REVIEW
02	2021-06-18	ISSUED FOR TENDER



Drawing Prepared By:

Arva  
R.V. Anderson Associates Limited  
engineering • environment • infrastructure

Client:

middlesex centre  
in the centre of it all

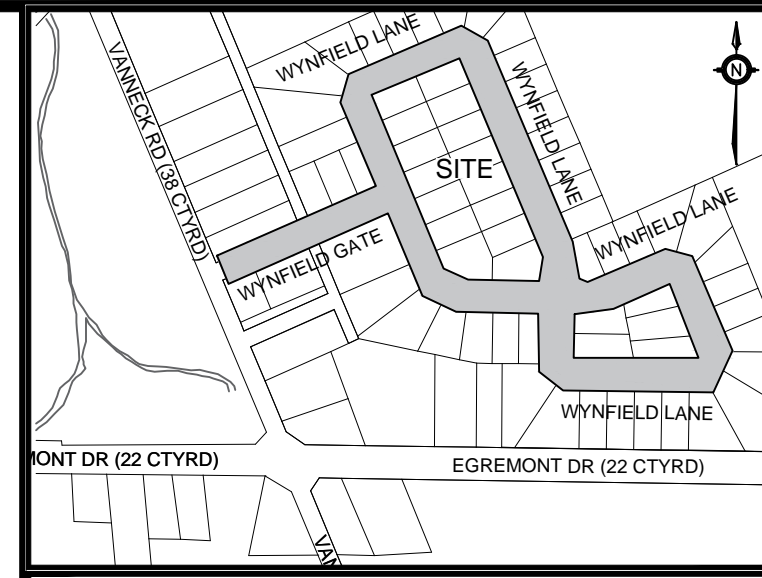
Project Name:  
**COMMUNITY OF MELROSE STREETLIGHT DESIGN**

Drawing Title:  
**STREETLIGHT SCHEMATIC**

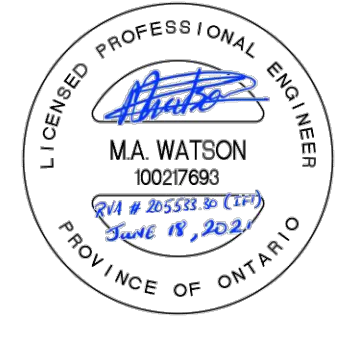
Drawn:	H.R.T	Design:	M.A.W.	Date:	JANUARY 2021
Checked:	P.L.G.	Approved:		Scale:	N.T.S.
CADD File:	205533 -PR-SHT-SL_Melrose.dwg			Dwg. No.:	SL-6
Project No.:	205533.30				



LIGHTING POLE ASSEMBLY SUMMARY																						
POLE NO.	ROAD	STATION	LOCATION		BASE		GRD.	INSTL.	POLE				ARM				LUMINAIRE				COORD	REMARKS
			RT. C/L	DISTANCE FROM LT. C/L	CONC. BASE	FRANG. BASE			INSTL.	MAT.	CAT. NUMBER	LENGTH (m)	INSTL.	LENGTH (m)	CAT. NUMBER	INSTL.	WATTAGE	LAMP TYPE	PC			
P01	WYNFIELD GATE	0+226.7	-	6.7m	-	-	ONE	NEW	ALUM.	RTAP20-645C-1DR	7.32 m	NEW	1.2m	ALP-RE4M	NEW	23 W	LED	YES	N - 1 212 786.246 E - 540.988			
P02	WYNFIELD GATE	0+178.4	-	6.7m	-	-	-	NEW	ALUM.	RTAP20-645C-1DR	7.32 m	NEW	1.2m	ALP-RE4M	NEW	23 W	LED	YES	N - 1 212 818.146 E - 540.989			
P03	WYNFIELD GATE	0+145.6	-	6.7m	-	-	-	NEW	ALUM.	RTAP20-645C-1DR	7.32 m	NEW	1.2m	ALP-RE4M	NEW	23 W	LED	YES	N - 1 212 848.446 E - 540.990			
P04	WYNFIELD GATE	0+112.4	-	6.7m	-	-	-	NEW	ALUM.	RTAP20-645C-1DR	7.32 m	NEW	1.2m	ALP-RE4M	NEW	23 W	LED	YES	N - 1 212 878.646 E - 540.992			
P05	WYNFIELD GATE	0+075.9	-	6.7m	-	-	ONE	NEW	ALUM.	RTAP20-645C-1DR	7.32 m	NEW	1.2m	ALP-RE4M	NEW	41 W	LED	YES	N - 1 212 912.146 E - 540.993			
P06	WYNFIELD GATE	0+038.2	-	6.7m	-	-	-	NEW	ALUM.	RTAP20-645C-1DR	7.32 m	NEW	1.2m	ALP-RE4M	NEW	23 W	LED	YES	N - 1 212 946.746 E - 540.994			
P07	WYNFIELD GATE	0+009.9	-	6.7m	-	-	-	NEW	ALUM.	RTAP20-645C-1DR	7.32 m	NEW	1.2m	ALP-RE4M	NEW	41 W	LED	YES	N - 1 212 972.746 E - 540.996			
P08	WYNFIELD LANE	0+019.7	6.6m	-	-	-	ONE	NEW	ALUM.	RTAP20-645C-1DR	7.32 m	NEW	1.2m	ALP-RE4M	NEW	23 W	LED	YES	N - 1 212 983.146 E - 540.997			
P09	WYNFIELD LANE	0+050.2	6.6m	-	-	-	-	NEW	ALUM.	RTAP20-645C-1DR	7.32 m	NEW	1.2m	ALP-RE4M	NEW	23 W	LED	YES	N - 1 212 971.246 E - 541.000			
P10	WYNFIELD LANE	0+081.5	6.6m	-	-	-	-	NEW	ALUM.	RTAP20-645C-1DR	7.32 m	NEW	1.2m	ALP-RE4M	NEW	23 W	LED	YES	N - 1 212 959.346 E - 541.003			
P11	WYNFIELD LANE	0+115.5	6.5m	-	-	-	ONE	NEW	ALUM.	RTAP20-645C-1DR	7.32 m	NEW	1.2m	ALP-RE4M	NEW	23 W	LED	YES	N - 1 212 950.146 E - 541.006			
P12	WYNFIELD LANE	0+141.0	6.5m	-	-	-	-	NEW	ALUM.	RTAP20-645C-1DR	7.32 m	NEW	1.2m	ALP-RE4M	NEW	23 W	LED	YES	N - 1 212 960.846 E - 541.006			
P13	WYNFIELD LANE	0+171.3	6.6m	-	-	-	-	NEW	ALUM.	RTAP20-645C-1DR	7.32 m	NEW	1.2m	ALP-RE4M	NEW	23 W	LED	YES	N - 1 212 960.846 E - 541.007			
P14	WYNFIELD LANE	0+200.1	6.6m	-	-	-	-	NEW	ALUM.	RTAP20-645C-1DR	7.32 m	NEW	1.2m	ALP-RE4M	NEW	23 W	LED	YES	N - 1 212 988.446 E - 541.009			
P15	WYNFIELD LANE	0+231.0	6.6m	-	-	-	-	NEW	ALUM.	RTAP20-645C-1DR	7.32 m	NEW	1.2m	ALP-RE4M	NEW	23 W	LED	YES	N - 1 213 016.469 E - 541.010			
P16	WYNFIELD LANE	0+256.7	6.4m	-	-	-	-	NEW	ALUM.	RTAP20-645C-1DR	7.32 m	NEW	1.2m	ALP-RE4M	NEW	23 W	LED	YES	N - 1 213 061.400 E - 541.011			
P17	WYNFIELD LANE	0+290.0	6.6m	-	-	-	ONE	NEW	ALUM.	RTAP20-645C-1DR	7.32 m	NEW	1.2m	ALP-RE4M	NEW	23 W	LED	YES	N - 1 213 075.246 E - 541.008			
P18	WYNFIELD LANE	0+321.2	6.6m	-	-	-	-	NEW	ALUM.	RTAP20-645C-1DR	7.32 m	NEW	1.2m	ALP-RE4M	NEW	23 W	LED	YES	N - 1 213 087.446 E - 541.008			
P19	WYNFIELD LANE	0+352.1	6.6m	-	-	-	-	NEW	ALUM.	RTAP20-645C-1DR	7.32 m	NEW	1.2m	ALP-RE4M	NEW	23 W	LED	YES	N - 1 213 099.546 E - 541.005			
P20	WYNFIELD LANE	0+384.3	6.6m	-	-	-	ONE	NEW	ALUM.	RTAP20-645C-1DR	7.32 m	NEW	1.2m	ALP-RE4M	NEW	23 W	LED	YES	N - 1 213 111.646 E - 541.002			
P21	WYNFIELD LANE	0+414.3	6.6m	-	-	-	ONE	NEW	ALUM.	RTAP20-645C-1DR	7.32 m	NEW	1.2m	ALP-RE4M	NEW	23 W	LED	YES	N - 1 213 123.746 E - 541.000			
P22	WYNFIELD LANE	0+445.5	6.6m	-	-	-	-	NEW	ALUM.	RTAP20-645C-1DR	7.32 m	NEW	1.2m	ALP-RE4M	NEW	23 W	LED	YES	N - 1 213 135.946 E - 540.994			
P23	WYNFIELD LANE	0+477.3	6.4m	-	-	-	-	NEW	ALUM.	RTAP20-645C-1DR	7.32 m	NEW	1.2m	ALP-RE4M	NEW	23 W	LED	YES	N - 1 213 148.446 E - 540.991			
P24	WYNFIELD LANE	0+510.3	6.6m	-	-	-	ONE	NEW	ALUM.	RTAP20-645C-1DR	7.32 m	NEW	1.2m	ALP-RE4M	NEW	23 W	LED	YES	N - 1 213 154.469 E - 540.883			
P25	WYNFIELD LANE	0+528.3	6.6m	-	-	-	-	NEW	ALUM.	RTAP20-645C-1DR	7.32 m	NEW	1.2m	ALP-RE4M	NEW	23 W	LED	YES	N - 1 213 148.469 E - 540.991			
P26	WYNFIELD LANE	0+558.0	6.7m	-	-	-	ONE	NEW	ALUM.	RTAP20-645C-1DR	7.32 m	NEW	1.2m	ALP-RE4M	NEW	23 W	LED	YES	N - 1 213 154.746 E - 540.988			
P27	WYNFIELD LANE	0+572.0	6.6m	-	-	-	-	NEW	ALUM.	RTAP20-645C-1DR	7.32 m	NEW	1.2m	ALP-RE4M	NEW	23 W	LED	YES	N - 1 213 154.646 E - 540.985			
P28	WYNFIELD LANE	0+620.0	6.6m	-	-	-	ONE	NEW	ALUM.	RTAP20-645C-1DR	7.32 m	NEW	1.2m	ALP-RE4M	NEW	23 W	LED	YES	N - 1 213 154.446 E - 540.993			
P29	WYNFIELD LANE	0+646.5	6.6m	-	-	-	-	NEW	ALUM.	RTAP20-645C-1DR	7.32 m	NEW	1.2m	ALP-RE4M	NEW	23 W	LED	YES	N - 1213154.346 E - 540.977			
P30	WYNFIELD LANE	0+676.4	6.6m	-	-	-	-	NEW	ALUM.	RTAP20-645C-1DR	7.32 m	NEW	1.2m	ALP-RE4M	NEW	23 W	LED	YES	N - 1 213 246.346 E - 540.975			
P31	WYNFIELD LANE	0+706.7	6.6m	-	-	-	ONE	NEW	ALUM.	RTAP20-645C-1DR	7.32 m	NEW	1.2m	ALP-RE4M	NEW	23 W	LED	YES	N - 1 213 276.346 E - 540.975			
P32	WYNFIELD LANE	0+737.1	6.6m	-	-	-	-	NEW	ALUM.	RTAP20-645C-1DR	7.32 m	NEW	1.2m	ALP-RE4M	NEW	23 W	LED	YES	N - 1 213 306.446 E - 540.975			
P33	WYNFIELD LANE	0+766.8	6.7m	-	-	-	-	NEW	ALUM.	RTAP20-645C-1DR	7.32 m	NEW	1.2m	ALP-RE4M	NEW	23 W	LED	YES	N - 1 213 334.646 E - 540.975			
P34	WYNFIELD LANE	0+793.6	6.6m	-	-	-	ONE	NEW	ALUM.	RTAP20-645C-1DR	7.32 m	NEW	1.2m	ALP-RE4M	NEW	23 W	LED	YES	N - 1 213 334.646 E - 540.976			
P35	WYNFIELD LANE	0+822.4	6.6m	-	-	-	ONE	NEW	ALUM.	RTAP20-645C-1DR	7.32 m	NEW	1.2m	ALP-RE4M	NEW	23 W	LED	YES	N - 1 213 323.146 E - 540.980			
P36	WYNFIELD LANE	0+852.5	6.6m	-	-	-	-	NEW	ALUM.	RTAP20-645C-1DR	7.32 m	NEW	1.2m	ALP-RE4M	NEW	23 W	LED	YES	N - 1 213 312.646 E - 540.983			
P37	WYNFIELD LANE	0+880.0	6.6m	-	-	-	ONE	NEW	ALUM.	RTAP20-645C-1DR	7.32 m	NEW	1.2m	ALP-RE4M	NEW	23 W	LED	YES	N - 1 213 288.546 E - 540.985			
P38	WYNFIELD LANE	0+935.5	6.6m	-	-	-	-	NEW	ALUM.	RTAP20-645C-1DR	7.32 m	NEW	1.2m	ALP-RE4M	NEW	41 W	LED	YES	N - 1 213 251.946 E - 540.988			
P39	WYNFIELD LANE	0+950.4	6.6m	-	-	-	-	NEW	ALUM.	RTAP20-645C-1DR	7.32 m	NEW	1.2m	ALP-RE4M	NEW	23 W	LED	YES	N - 1 213 219.646 E - 540.987			
P40	WYNFIELD LANE	0+980.2	6.7m	-	-	-	ONE	NEW	ALUM.	RTAP20-645C-1DR	7.32 m	NEW	1.2m	ALP-RE4M	NEW	23 W	LED	YES	N - 1 213 196.146 E - 540.996			
P41	WYNFIELD LANE	1+009.2	6.6m	-	-	-	-	NEW	ALUM.	RTAP20-645C-1DR	7.32 m	NEW	1.2m	ALP-RE4M	NEW	23 W	LED	YES	N - 1 213 171.246 E - 540.985			
P42	WYNFIELD LANE	1+034.0	6.6m	-	-	-	ONE	NEW	ALUM.	RTAP20-645C-1DR	7.32 m	NEW	1.2m	ALP-RE4M	NEW	23 W	LED	YES	N - 1 213 149.446 E - 540.985			
P43	WYNFIELD LANE	1+055.8	6.6m	-	-	-	-	NEW	ALUM.	RTAP20-645C-1DR	7.32 m	NEW	1.2m	ALP-RE4M	NEW	23 W	LED	YES	N - 1 213 119.246 E - 540.985			
P44	WYNFIELD LANE	1+086.0	6.6m	-	-	-	ONE	NEW	ALUM.	RTAP20-645C-1DR	7.32 m	NEW	1.2m	ALP-RE4M	NEW	23 W	LED	YES	N - 1 213 089.469 E - 540.985			
P45	WYNFIELD LANE	1+116.2	6.7m	-	-	-	-	NEW	ALUM.	RTAP20-645C-1DR	7.32 m	NEW	1.2m	ALP-RE4M	NEW	23 W	LED	YES	N - 1 213 089.469 E - 540.985			
P46	WYNFIELD LANE	1+147.4	6.6m	-	-	-	-	NEW	ALUM.	RTAP20-645C-1DR	7.32 m	NEW	1.2m	ALP-RE4M	NEW	23 W	LED	YES	N - 1 213 058.746 E - 540.995			
P47	WYNFIELD LANE	1+180.1	6.8m	-	-	-	ONE	NEW	ALUM.	RTAP20-645C-1DR	7.32 m	NEW	1.2m	ALP-RE4M	NEW	23 W	LED	YES	N - 1 213 033.646 E - 540.986			
P48	WYNFIELD LANE	1+211.2	6.6m	-	-	-	-	NEW	ALUM.	RTAP20-645C-1DR	7.32 m	NEW	1.2m	ALP-RE4M	NEW	23 W	LED	YES	N - 1 213 019.946 E - 540.989			
P49	WYNFIELD LANE	1+245.1	6.6m	-	-	-	-	NEW	ALUM.	RTAP20-645C-1DR	7.32 m	NEW	1.2m	ALP-RE4M	NEW	23 W	LED	YES	N - 1 213 007.469 E - 540.992			
P50	WYNFIELD LANE	1+276.1	6.6m	-	-	-	ONE	NEW	ALUM.	RTAP20-645C-1DR	7.32 m	NEW	1.2m	ALP-RE4M	NEW	23 W	LED	YES	N - 1 212 995.146 E - 540.995			



KEY PLAN N.T.S.		
No.	Revision	Comments
00	2021-02-01	ISSUED FOR PRELIMINARY REVIEW
01	2021-03-11	ISSUED FOR HONI REVIEW
02	2021-06-18	ISSUED FOR TENDER



Drawing Prepared By:

R.V. Anderson Associates Limited  
engineering • environment • infrastructure

Client:

in the centre of it all

Project Name:

**COMMUNITY OF MELROSE STREETLIGHT DESIGN**

Drawing Title:

**POLE ASSEMBLY TABLE**

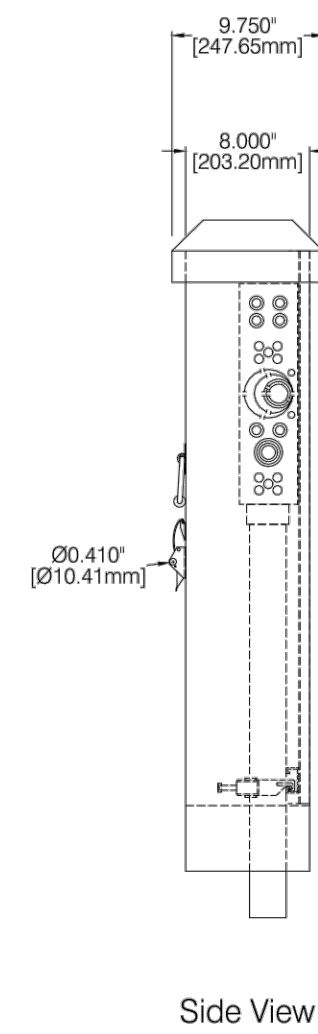
Drawn:	H.R.T.	Design:	M.A.W.	Date:	JANUARY 2021
Checked:	P.L.G.	Approved:		Scale:	N.T.S.
CADD File:	205533 -PR-SHT-SL_Melrose.dwg		Dwg. No.:	SL-7	
Project No.:	205533.30				

UNDERPAVEMENT CROSSINGS						
CROSSING	ROAD	LENGTH (m)	TYPE OF INSTALLATION	DUCTS		REMARKS
				QTY.	SIZE	
UPC01	WYNFIELD GATE	16.22 m	OPEN CUT	2	100 mm	RPVC
UPC02	WYNFIELD LANE	11.66 m	OPEN CUT	2	100 mm	RPVC
UPC03	WYNFIELD LANE	11.56 m	OPEN CUT	2	100 mm	RPVC

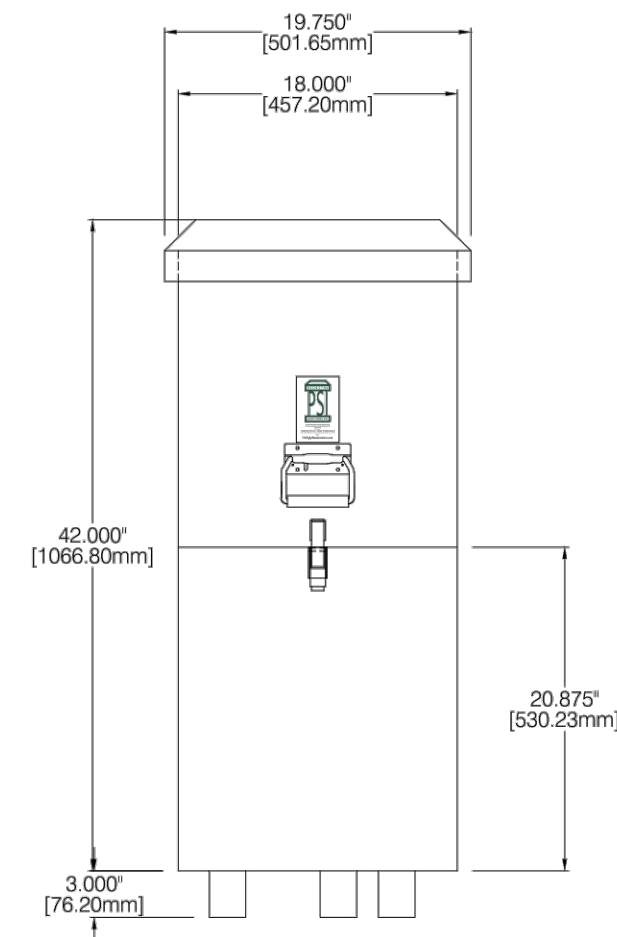






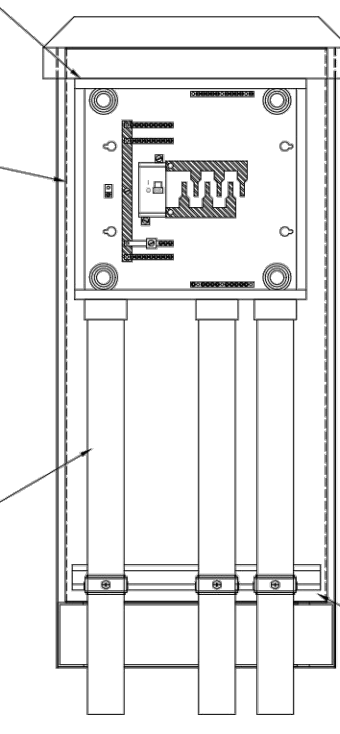


Side View



Front Outside View with Front Panels in place

Square D  
12 Cir. Distribution Panel  
with 60A or 100A Main Breaker



Front Outside View with Upper and Lower Front Panels removed

Backplate

2" PVC Conduit for incoming feed

Unistrut to fasten outgoing field conduits

SL42 Pedestal  
(Typical Layout)

Materials Notes:

Enclosure Mat:  
1/2" galv. (1.02) thick aluminum sheet metal

Paint Colour:  
Ryans Bush Jet Kote BB10GR Electrostatic powder coat finish

Distribution Panel:  
Square D cat# CDO11M100PC, 12cct., 7p, 3w  
Combination service entrance panel  
GFI  
Square D cat# CDO11M50PC, 12cct., 7p, 3w  
Combination service entrance panel

Main Breaker:  
Square D cat# CMO100DAL, 100amp, 3pole  
Wire range #4-20 AICU, 25A I.C. rating  
GFI  
Square D cat# CMO100DAL, 100amp, 2pole  
Wire range #4-20 AICU, 25A I.C. rating

Load Breaker:  
Square D cat# QO series  
Single Pole, QOxxx (xxx=Amperage)  
Double Pole, QOxxx (xxx=Amperage)  
(see pedestal part number for breaker description)

Main Neutral Lug:  
Wire range #4-20 AICU

Load Neutral Lug:  
Wire Range 1 kg #4-20 AICU,  
3 lugs #14-10 AICU, 6 lugs #14-#6 AICU

Fasteners:  
4-Plated hex head bolts, 1/2"x1/2" Grade 2 or better  
4-Plated 1/2" Flat washers  
4-Plated 1/2" Lock washers  
for mounting into concrete mounting base

Contactor:none  
Timer Override Switch:none  
Timer:none  
Junction Box:none  
Meter Base:none

Part Number Explanation:  
SL42X-XXX  
— size of load breaker  
— quantity of load breakers  
— # of poles on load breakers in feed grade... 1 or 2 pole  
— height of pedestal in inches  
— model of pedestal  
Street Lighting

PEDESTAL SOLUTIONS INC.  
6502 Riverchase Road, Unit #6  
Bellaire, TX, USA, 77401  
Tel: (905) 715-2056  
Email: info@pedestalsolutions.com

TITLE: PEDESTAL SOLUTIONS INC.  
42" STREET LIGHTING  
PEDESTAL VIEW

DRAWN BY: RAD PART NO: SL42 TYPICAL  
CHECKED BY: BP DWG NO: SL42 TYPICAL  
SCALE: NONE  
REVISION: A  
DATE: JUNE 3, 2020 PAGE: 1 OF 1

## UP1420P

PRECAST PEDESTAL FOUNDATION FOR METERING OR STREETLIGHTING

TYPICAL USE:  
Pedestal solutions inc. Model SLS & SLT  
Powerstream stock code 1800024

CONSTRUCTION SPECIFICATIONS

Concrete Properties: 4500 PSI (32 MPa) Min Strength  
6-8% Air Entrainment  
Meets CSA A23.1

Weight - 540 lbs / 220kg (Approximate)

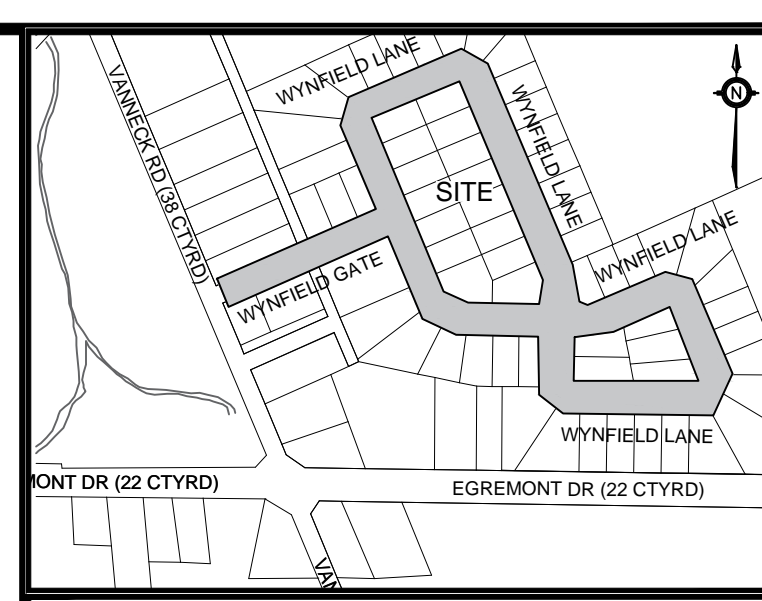
Notes:  
1 - Six (6) 1/2" N.C. Nylon threaded inserts  
2 - Four (4) 3/4" through holes  
3 - Six (6) Cable entry PVC seals

Delivery is made by crane-equipped trucks, excavation must be ready, safe and accessible for unloading from the rear of the truck. Min overhead clearance of 18ft is required. ALL UNITS MUST BE HANDLED WITH PROPER LIFTING EQUIPMENT. (I.E. SPREADER BAR)

Call: (905)778-8400

in (mm)

DRAWN BY: RM March 2010



KEY PLAN  
N.T.S.

No.	Revision	Comments
00	2021-02-01	ISSUED FOR PRELIMINARY REVIEW
01	2021-03-11	ISSUED FOR HONI REVIEW
02	2021-06-18	ISSUED FOR TENDER



Drawing Prepared By:

R.V. Anderson Associates Limited  
engineering • environment • infrastructure

Client:

in the centre of it all

Project Name:  
**COMMUNITY OF MELROSE STREETLIGHT DESIGN**

Drawing Title:  
**STREETLIGHT DETAIL 2**

Drawn:	H.R.T	Design:	M.A.W.	Date:	JANUARY 2021
Checked:	P.L.G.	Approved:		Scale:	N.T.S.
CADD File:	205533 -PR-SHT-SL_Melrose.dwg	Dwg. No.:			
Project No.:	205533.30				SL-DET-2