



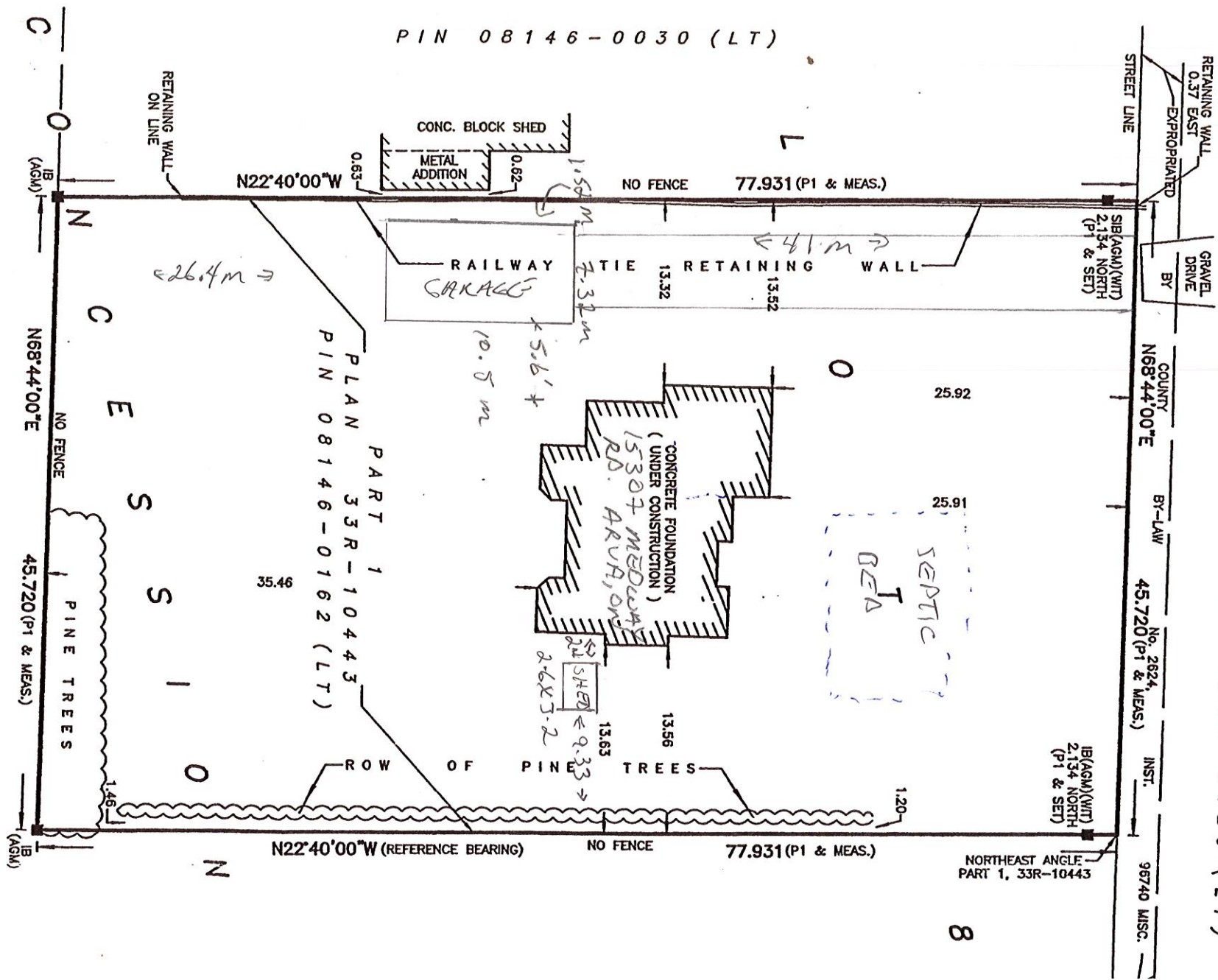
15307

# MEDWAY ROAD

(NAMED BY BY-LAW No. 6057, INST. No. LT225108) (WIDTH VARIES)

## ORIGINAL ROAD ALLOWANCE BETWEEN CONCESSIONS 6 & 7 COUNTY ROAD No. 28

PIN 08146-0129 (LT)



GARAGE: 7.32x10.37m  
 Zoning: HRL  
 Bldg Coverage: 77.0m<sup>2</sup> + shed 8.2m<sup>2</sup> = 85.2m<sup>2</sup>  
 Lot Area: 545.49m<sup>2</sup>  
 Lot Coverage: 16%

SCALE: 1:400