



McKELLAR GATE PVT

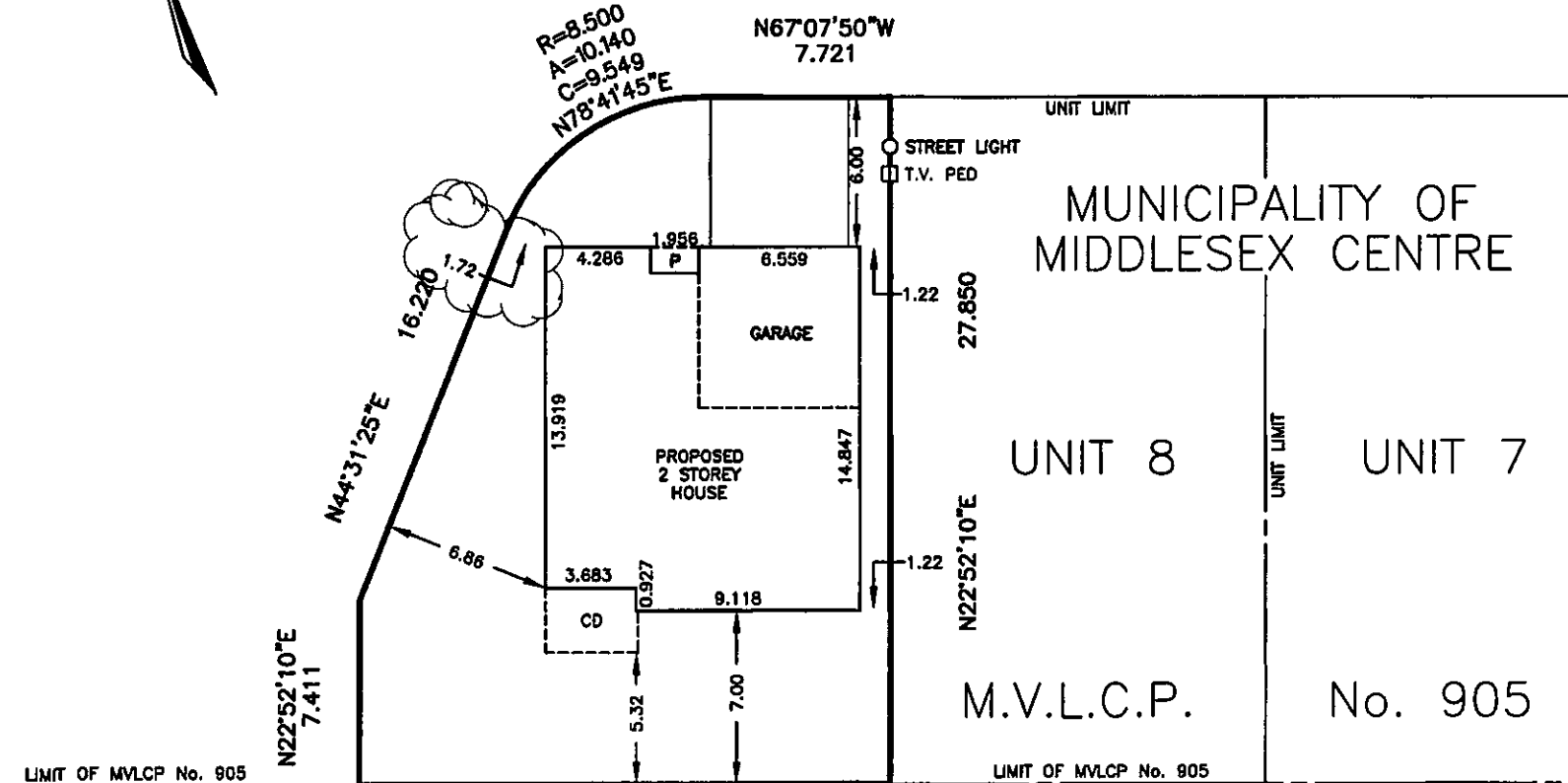
SITE PLAN
 OF ALL OF
 UNIT 9
 MIDDLESEX VACANT LAND
 CONDOMINIUM PLAN No. 905
 IN THE
 MUNICIPALITY OF MIDDLESEX CENTRE
 COUNTY OF MIDDLESEX

SCALE 1:300



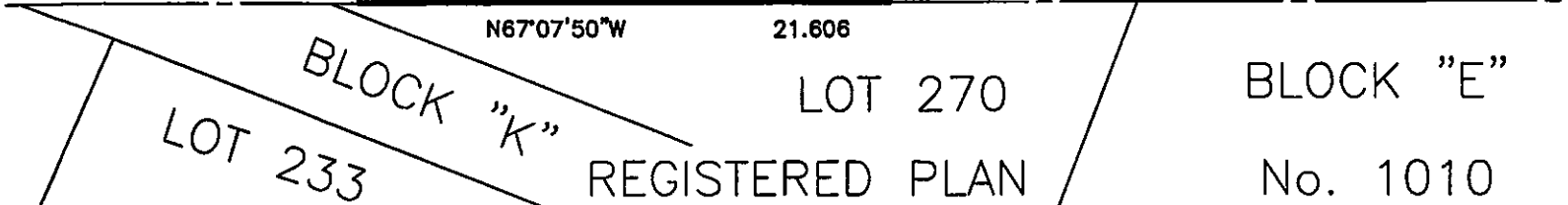
SCALE IN METRES

METRIC: DISTANCES SHOWN ON THIS PLAN ARE IN METRES AND CAN BE CONVERTED TO FEET BY DIVIDING BY 0.3048.



LIMIT OF MVLCP No. 905

LIMIT OF MVLCP No. 905



	Area m.sq.	Coverage %
Driveway	33.834	6.60
Building	152.479	29.73
Landscape	283.552	55.29
Garage	42.988	8.38

PLAN DRAWN: JANUARY 8, 2019



ARCHIBALD, GRAY & McKAY LTD.
 3514 WHITE OAK ROAD, LONDON, ON, N6E 2Z9
 PHONE 519-685-5300 FAX 519-685-5303
 EMAIL info@agm.on.ca WEB www.agm.on.ca

DRAWN BY: CL	DIGITAL FILE: C905U009.dwg	BUILDER:
CHECKED BY: CRP	COGO FILE: CON905GN.COG	MELCHERS CONSTRUCTION
Plot date: Jan 14, 2019	FILE No: KO-COND0905-01-8	